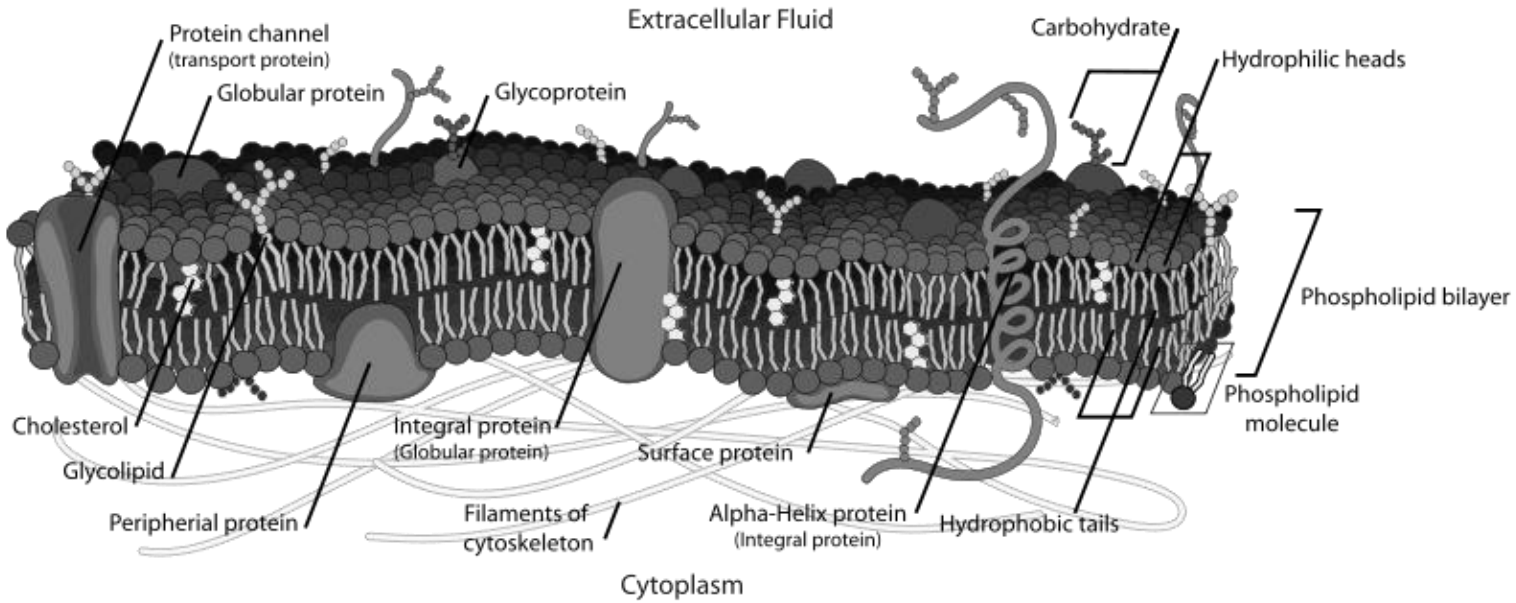


Plasma Membrane



Functions		
Selectively Permeable		
Phospholipid Bilayer		
Fluid Mosaic Model	Fluid & Mosaic	
	Phospholipids	
	Cholesterol	
	Membrane Proteins:	<p>Integral:</p> <p>Peripheral:</p>
	Glycoproteins	
	Glycolipids	

Roles:

<div style="border: 1px solid black; padding: 2px; width: 40px; margin: 0 auto;">Outside</div> <div style="border: 1px solid black; padding: 2px; width: 40px; margin: 0 auto;">Plasma membrane</div> <div style="border: 1px solid black; padding: 2px; width: 40px; margin: 0 auto;">Inside</div>	 Selective transport channel	 Enzyme	 Cell surface receptor
	 Cell surface identity marker	 Cell adhesion	 Attachment to the cytoskeleton

