

Plant Tissues



Meristematic cells:

3 Types of Plant Tissues:

-
-
-

Dermal Tissue:

Peridermal tissue:

Epidermal tissue:

Vascular Tissue:

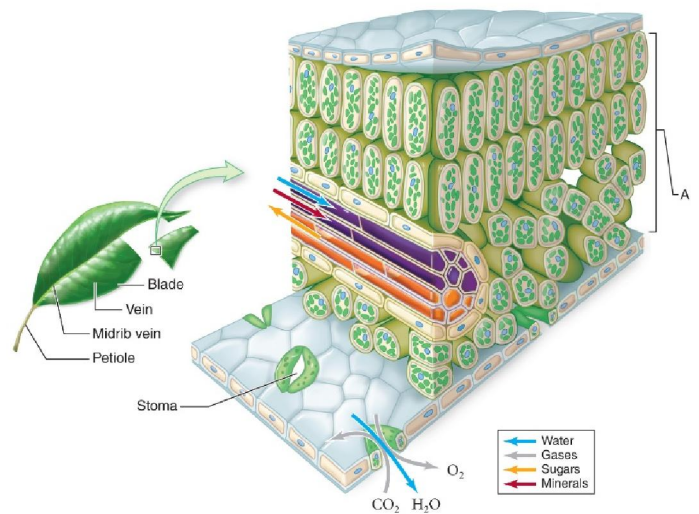
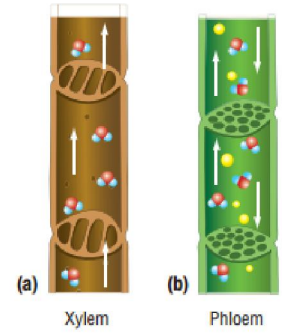
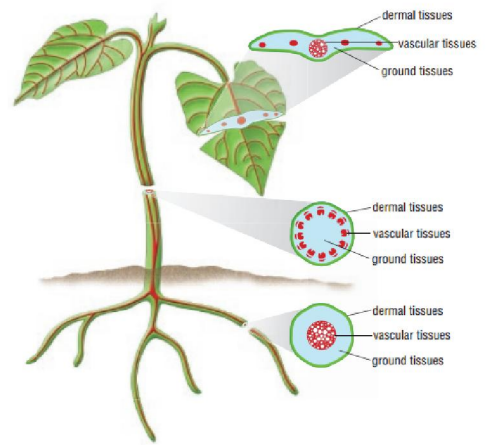
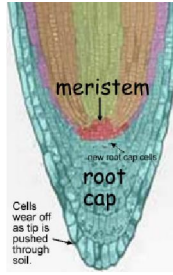
Xylem:

Phloem

Ground Tissue:

Palisade layer:

Spongy mesophyll:



Plant Systems



2 Main systems:

-
-

Root:

Functions

Growth

Shoot:

General functions

Stem functions

Leaf functions

Flower function

