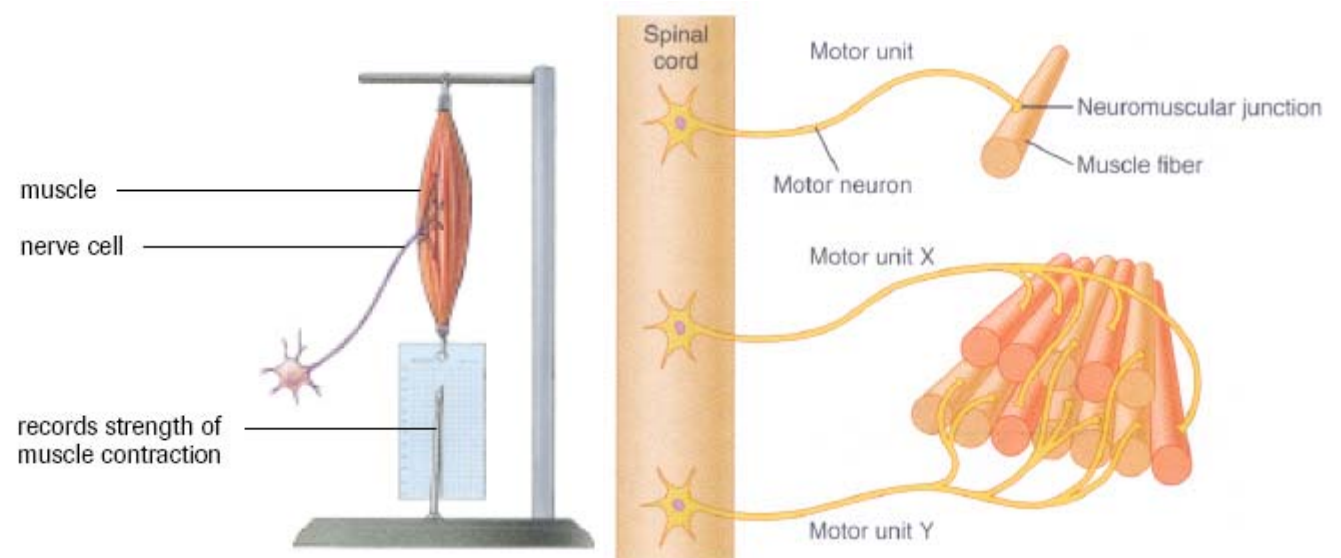


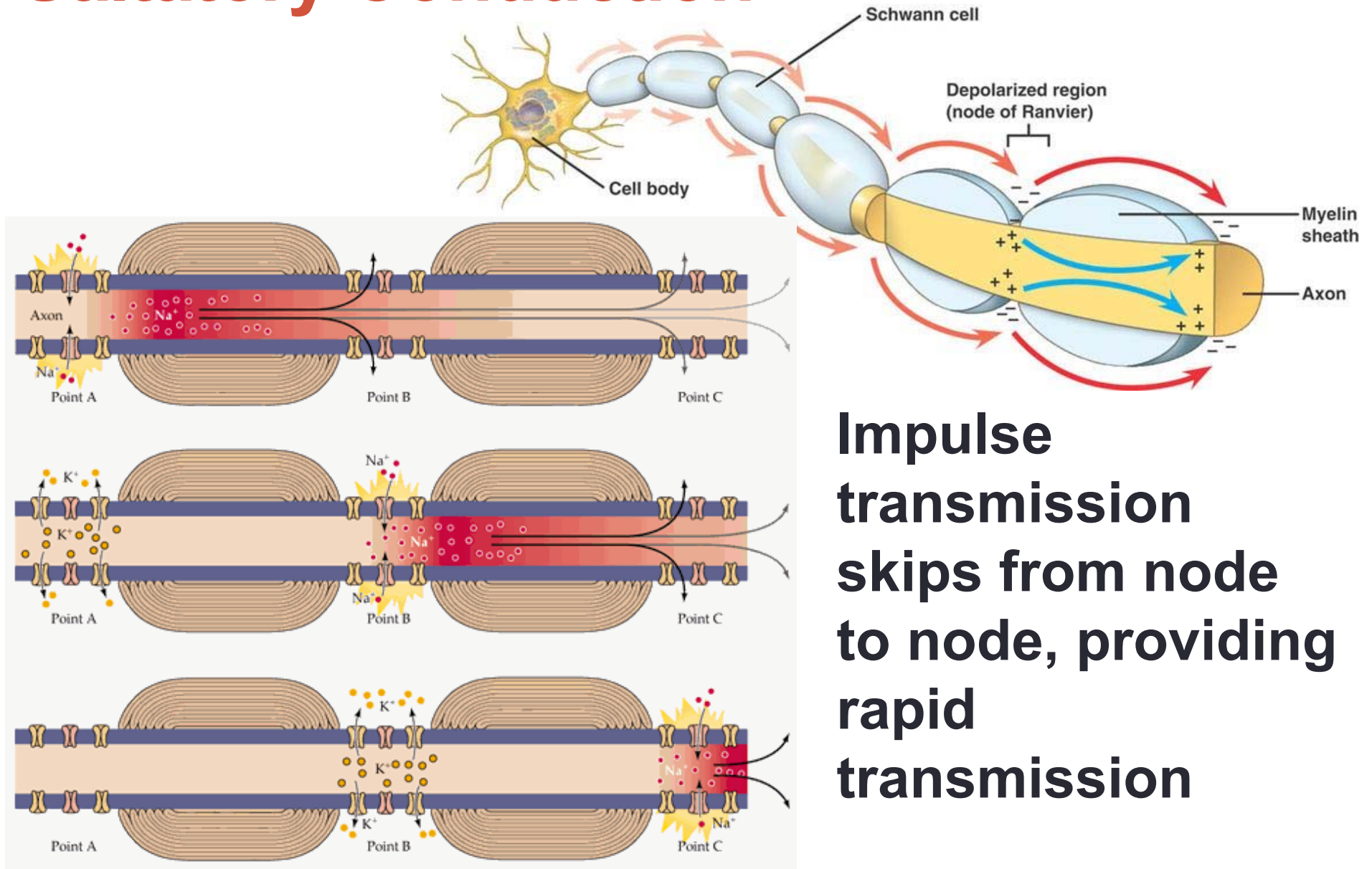
All or None Phenomenon

- Increasing the intensity of the **stimuli above threshold will not produce an increased response.**
- Neurons either fire **maximally or not at all.**

Strength of stimuli	Force of contraction
1 mV	—
2 mV	3 N
3 mV	3 N
10 mV	3 N



Saltatory Conduction



Impulse transmission skips from node to node, providing rapid transmission

Pain Killers

- Block Na^+ channels
- Prevent achievement of threshold

