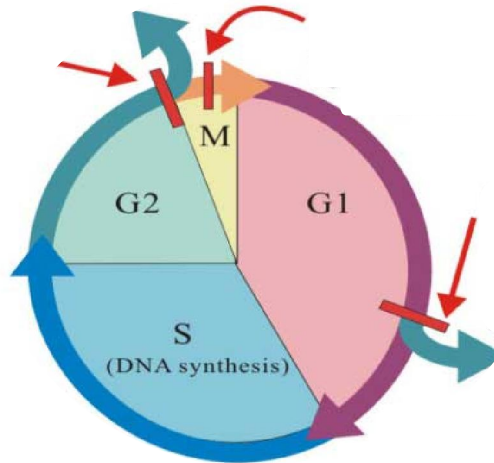
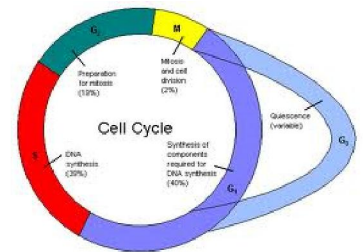


# Checkpoints, Cell Death & Cancer

Checkpoints:



G<sub>0</sub> Phase:



Cell Death

Necrosis	Apoptosis

Cancer:

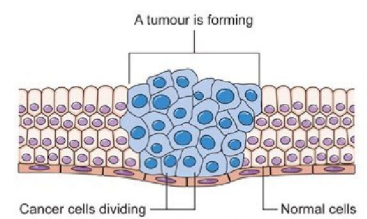
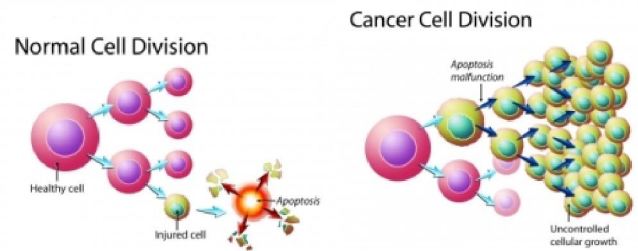
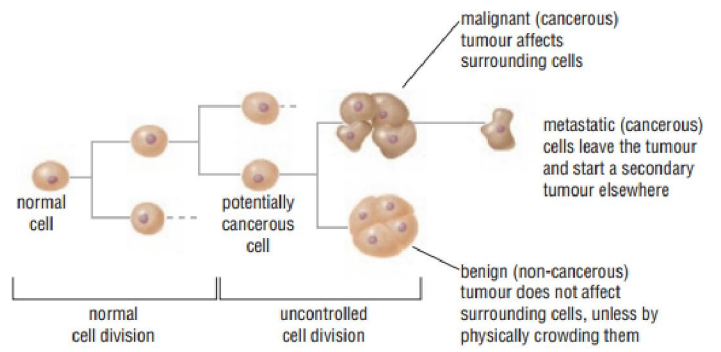
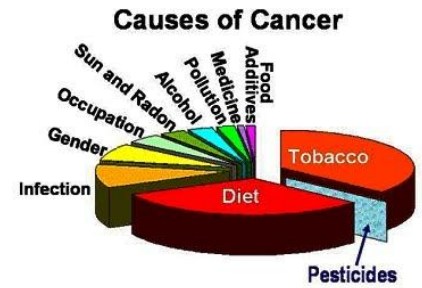
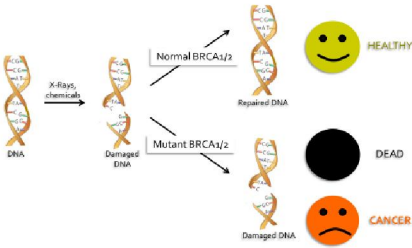


Diagram showing how cancer cells keep on reproducing to form a tumour  
Copyright © CancerHelp UK

## Tumors: 3 Classifications



## Cancer Causes:



## Cancer Screening & Diagnosis:

Moles: A

B

C

D

Common Symptoms:

## Comparing cells:

Normal	Cancer

## Treatments:

Type of Treatment	How it Works	Pros	Cons