

Brain Hat & Song Project

Name: _____



Group: _____

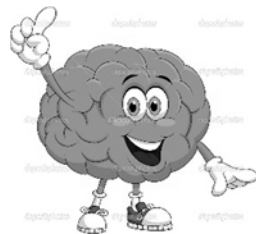
Requirements:

Hat (individual)	Song (individual OR group)
---------------------	-------------------------------

optional

- Lobes clearly identified & labelled
- Colours or decorations to show distinction between lobes
- Different example on each hemisphere

- Identify lobe functions with examples
- Written or typed lyrics



Rubric

	HAT - REQUIRED			SONG - OPTIONAL		
Lobe	Location	Examples (1 each hemisphere)		Function	Example	0- incorrectly identified/demonstrated 1- clearly and correctly identified/demonstrated
Frontal	0 1	0 1 2	0 1	0 1		
Motor	0 1	0 1 2	0 1	0 1		
Sensory	0 1	0 1 2	0 1	0 1		
Parietal	0 1	0 1 2	0 1	0 1		
Occipital	0 1	0 1 2	0 1	0 1		
Temporal	0 1	0 1 2	0 1	0 1		
TOTAL		/18		/30		

Comments: