

Brain Hat & Song Project

Name: _____



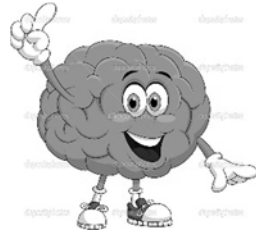
Group: _____

Requirements:

Hat (individual)	Song (individual OR group)
---------------------	-------------------------------

- Lobes clearly identified & labelled
- Colours or decorations to show distinction between lobes
- Different example on each hemisphere

- Identify lobes & functions with examples
- Actions to go along with song
(demonstrated during presentation)
- Song performed while wearing hat
- Written or typed lyrics



Rubric

	HAT			SONG		0- incorrectly identified/demonstrated 1- clearly and correctly identified/demonstrated
Lobe	Location	Examples <i>(1 each hemisphere)</i>	Function	Example with Action		
Frontal	0 1	0 1 2	0 1	0 1		
Motor	0 1	0 1 2	0 1	0 1		
Sensory	0 1	0 1 2	0 1	0 1		
Parietal	0 1	0 1 2	0 1	0 1		
Occipital	0 1	0 1 2	0 1	0 1		
Temporal	0 1	0 1 2	0 1	0 1		
TOTAL				/30		

Comments: