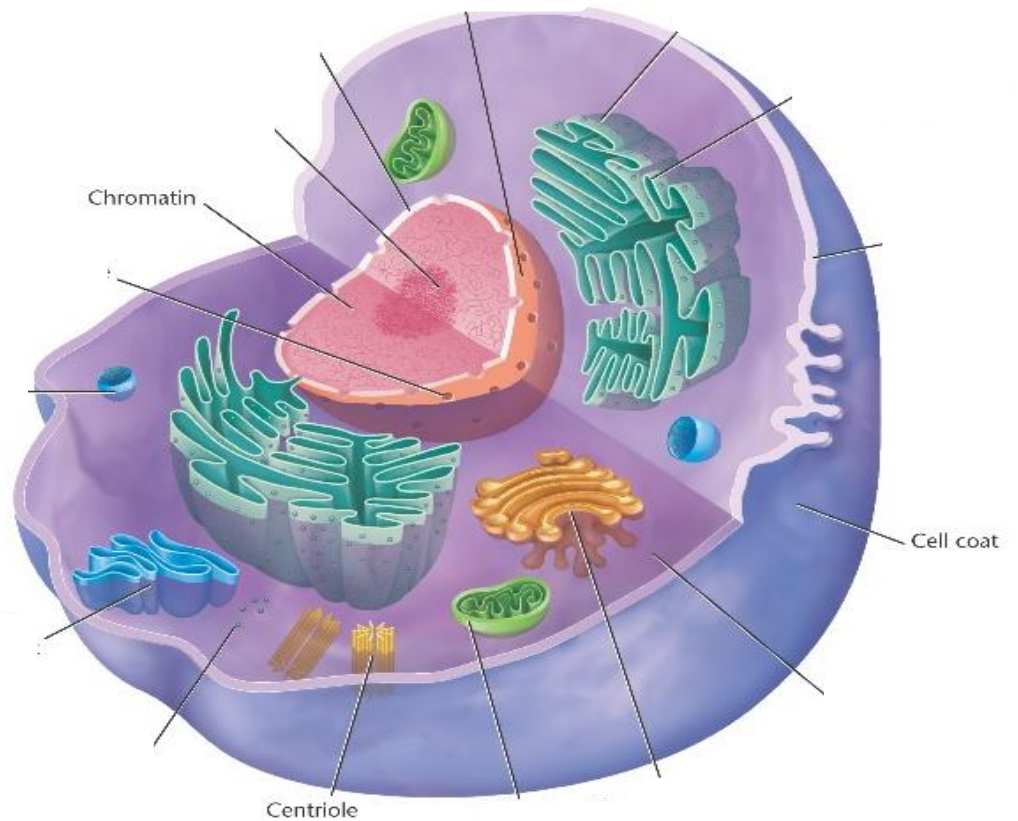
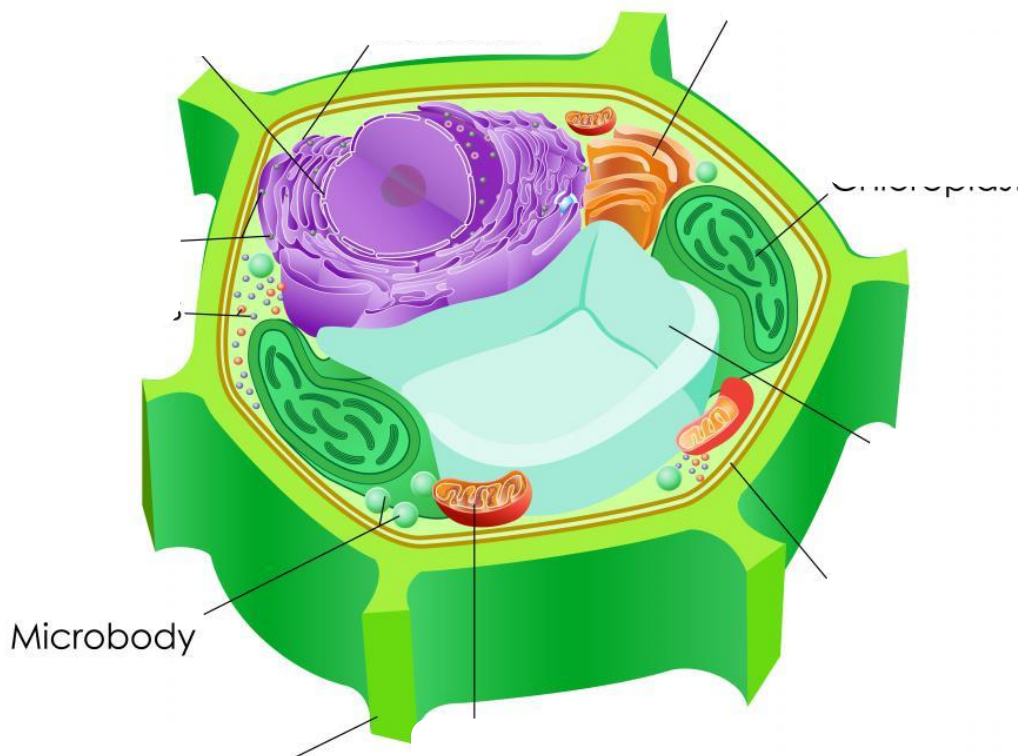


Animal and Plant Cells

Animal Cell



Plant Cell



wiseGEEK

Organelle Structure & Function Mix & Match

Structure/ Description	Organelle	Function
Membrane bound sack in the plant cell.	○ Cell (Plasma) Membrane ○	It is the spot of photosynthesis where energy is made for plant cells.
Spherical, often in the center of the cell, bounded by a membrane (skin).	○ Nucleus ○	It is used to transport food or other materials from one part of the cell to another.
Tiny, round organelles that float around in the cytoplasm or attaches to the Endoplasmic Reticulum.	○ Cytoplasm ○	Cell brain or the "computer" of the cell. Contains information to make the cell work.
Semi-permeable membrane surrounding the cell.	○ Vacuole ○	Works with the Endoplasmic Reticulum to transport materials across the cell.
Semi-fluid between the cell membrane and the nucleus.	○ Cell Wall ○	Jelly-like substance within the cell that holds up the other cell parts in the cells.
White, maze-like cell part surrounding the nucleus	○ Mitochondria ○	It's the "warehouse" in a cell that stores food and waste products.
Shaped like a football or a peanut in the cell.	○ Chloroplasts ○	It supports and creates the shape of a cell.
Surrounds a plant cell.	○ Endoplasmic Reticulum ○	It creates protein.
Green, similar in shape to a mitochondria.	○ Ribosomes ○	"Traffic-cop". It selects what enters the cell.
Stacks of saucer-like membranes	○ Golgi Apparatus (Body) ○	Called the "powerhouse of the cell" because it creates energy for the cell.

Cell Organelles Questions:

1. Describe 2 similarities and 2 differences between plant cells and animal cells.
2. How are the functions of the endoplasmic reticulum and golgi apparatus related?
3. Six of the organelles (other than the plasma membrane) contain one or more membranes. List these organelles.
4. Different cells contain different amounts of each organelle.
 - a) What type of organelle would be found in high amounts in a leaf cell?
 - b) What type of organelle would be found in high amounts in a muscle cell?
 - c) What type of organelle would be found in high amounts in a liver cell (the liver is an organ responsible for breaking down food and detoxifying the blood)?