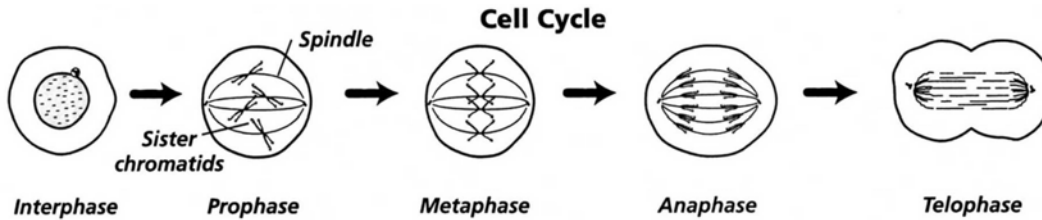


Mitosis Worksheet & Diagram Identification

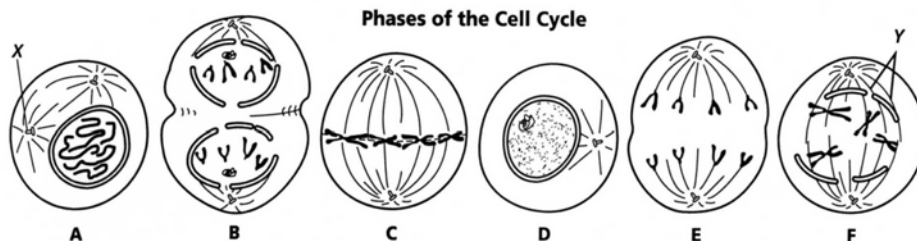


1. Chromosomes move to the middle of the cell during what phase? _____
2. When chromosomes separate? _____
3. During which phase do chromosomes first become visible? _____

Complete the table by checking the correct column for each statement.

Statement	Interphase	M Phase
4. Cell growth occurs		
5. Nuclear division occurs		
6. Chromosomes are distributed equally to daughter cells.		
7. DNA is doubled		
8. Cytoplasm divides and 2 daughter cells are formed		
9. Mitochondria and other organelles are made.		
10. Spindle fibers attach to centromeres of chromosomes		

The following pictures **are not in the correct order**. Use the letters below the pictures to answer the questions below.



11. Which cell is in metaphase? _____
12. Cells A and F show the start and end of the same phase of mitosis. What phase is it?

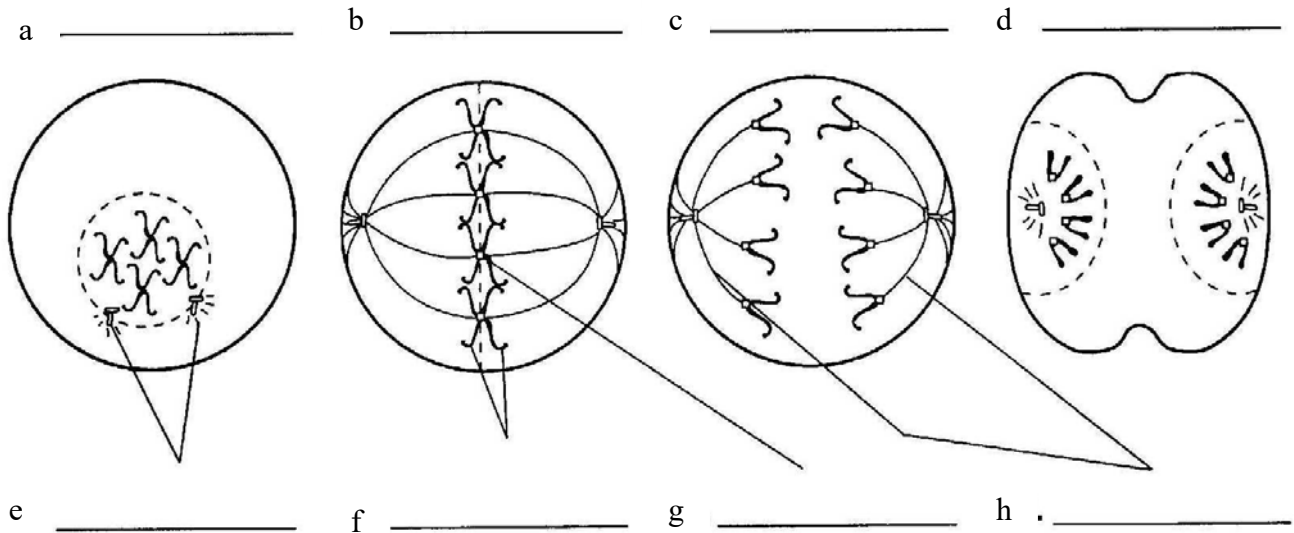
13. In cell F, what are the structures labeled Y? _____

Name: _____

14. Which cell is not in a phase of mitosis? _____
15. What two main changes are taking place in cell B? _____

16. What is the correct order of diagrams from first to last? _____
17. What is the end product of mitosis? _____
- 18.

Identify the following phases of mitosis. Use these choices: telophase, metaphase, anaphase, prophase. Then label the diagrams. Use these choices: sister chromatids, centromere, spindle fibers, centrioles.



19. Why is mitosis important?

20. Predict what would happen if an individual had spindle fibers that didn't work.

21. Predict what would happen if cytokinesis was skipped.