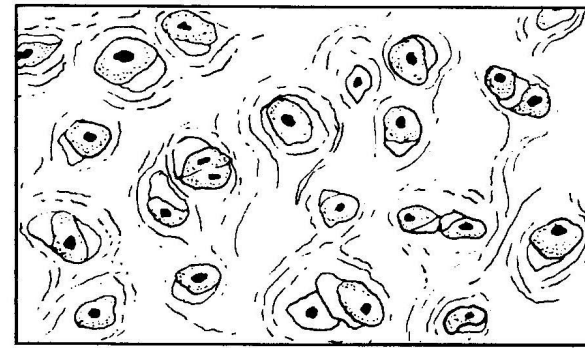
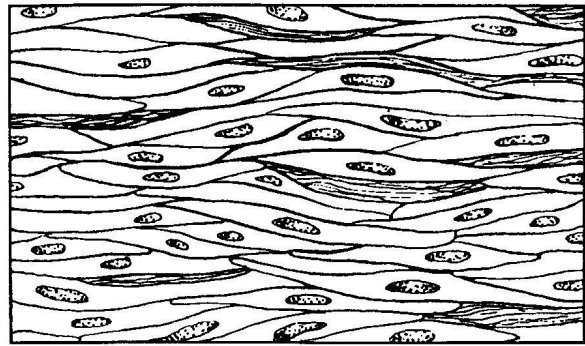




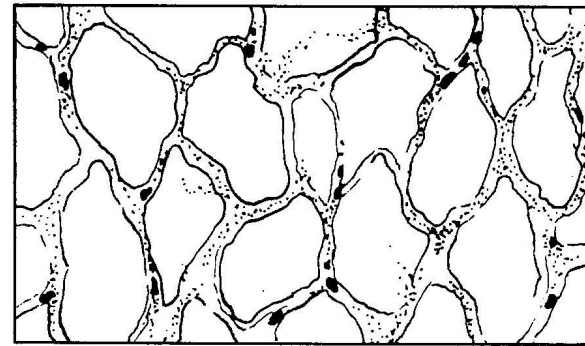
G _____



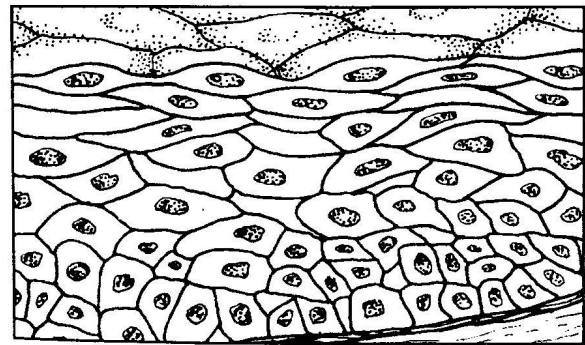
H _____



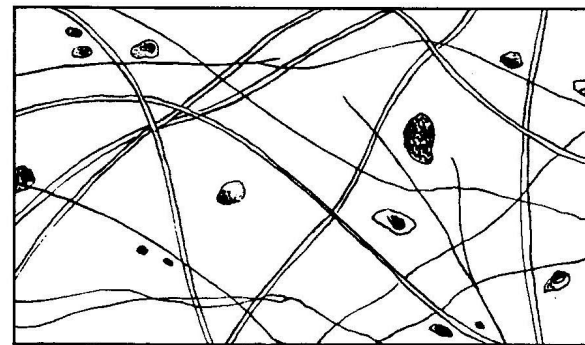
I _____



J _____



K _____



L _____

Using the key choices, correctly identify the following major tissue types. Enter the appropriate answer in the answer in the answer blanks.

A. Connective

B. Epithelium

C. Muscle

D. Nervous

- _____ Forms Membranes.
- _____ Allows for movement of limbs and for organ movements within the body.
- _____ Uses electrochemical signals to carry out its function.
- _____ Supports and reinforces body organs.
- _____ Cells of this tissue may absorb and/or secrete substances.
- _____ Basis of the major controlling system of the body.

- _____ Its cells shorten to exert force.
- _____ Forms endocrine and exocrine glands.
- _____ Surrounds and cushions body organs.
- _____ Allows you to smile, grasp, and swim, ski, and throw a ball.
- _____ Forms the bone.
- _____ Forms the brain and spinal cord.