

Topic 2: Plant and Animal Cells

Use textbook pg. 29-32 to create this note:

Organelle:

<i>Organelle found in both plants and animals</i>		
Name	Function	Structure/Description/Drawing
Cytoplasm		
Cell Membrane		
Nucleus		
Mitochondria		
Endoplasmic Reticulum		
Golgi Body		
Vacuoles		

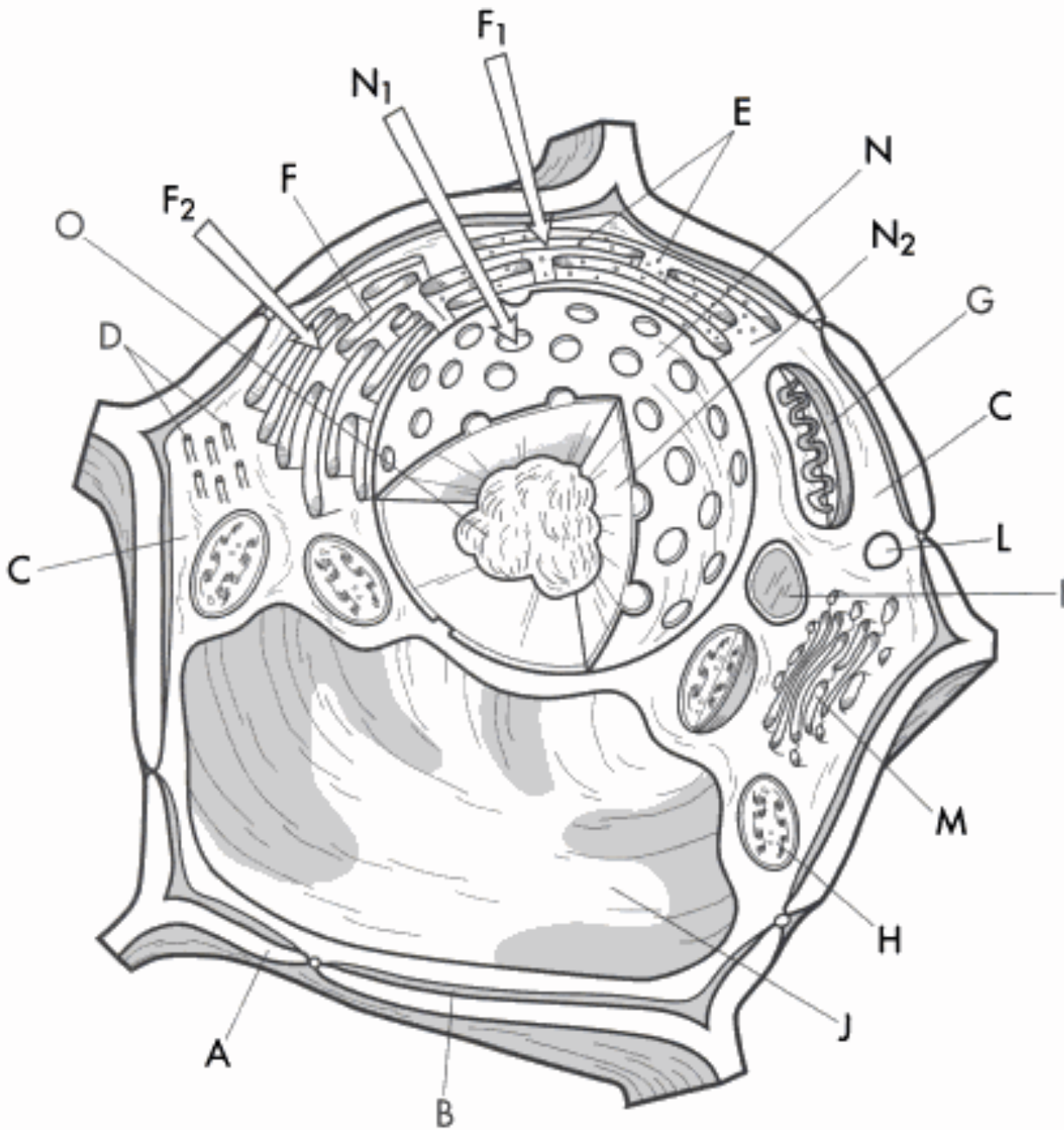
Nucleolus *Look up on internet		
Lysosomes *Look up on internet		
Ribosomes *Look up on internet		
Vesicle *Look up on internet		
<i>Organelles found only in plants</i>		
Cell wall		
Large Central Vacuole		
Chloroplasts		

Prokaryotes –

Eukaryotes –

Copy out Figure 1

Plant Cell - Colouring



The Plant Cell

- | | | |
|--|--|--|
| <ul style="list-style-type: none"> ○ Cell WallA ○ Cell MembraneB ○ Cytoplasm.....C * ○ CytoskeletonD ○ Ribosomes.....E ○ Endoplasmic Reticulum.....F | <ul style="list-style-type: none"> ○ Rough ER.....F₁ ○ Smooth ERF₂ ○ Mitochondrion.....G ○ Chloroplast.....H * ○ Plastid.....I ○ Vacuole.....J | <ul style="list-style-type: none"> ○ LysosomeL ○ Golgi BodyM ○ Nucleus.....N * ○ Nuclear Pore.....N₁ ○ NucleoplasmN₂ ○ Nucleolus.....O |
|--|--|--|

* Not found in list of organelles (enriched content)

Animal Cell - Colouring

Cell Membrane – A
 Nucleus
 Nuclear Envelope – B
 *Nuclear Pore – C
 Nucleolus – D
 Chromatin / DNA – E

Nucleoplasm– F
 Cytoplasm
 Mitochondrion – G
 Golgi Complex – H
 *Centriole – I
 *Microtubule – J

Vacuole – K
 Lysosome – L
 * Microfilament – N
 Ribosome – O
 Endoplasmic Reticulum – P

* Not found in list of organelles (enriched content)

