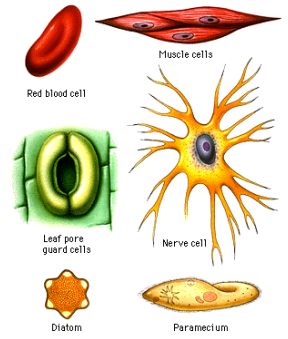


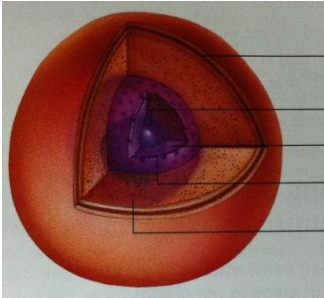
Topic 1: Cells & Organelles

Cell Theory:

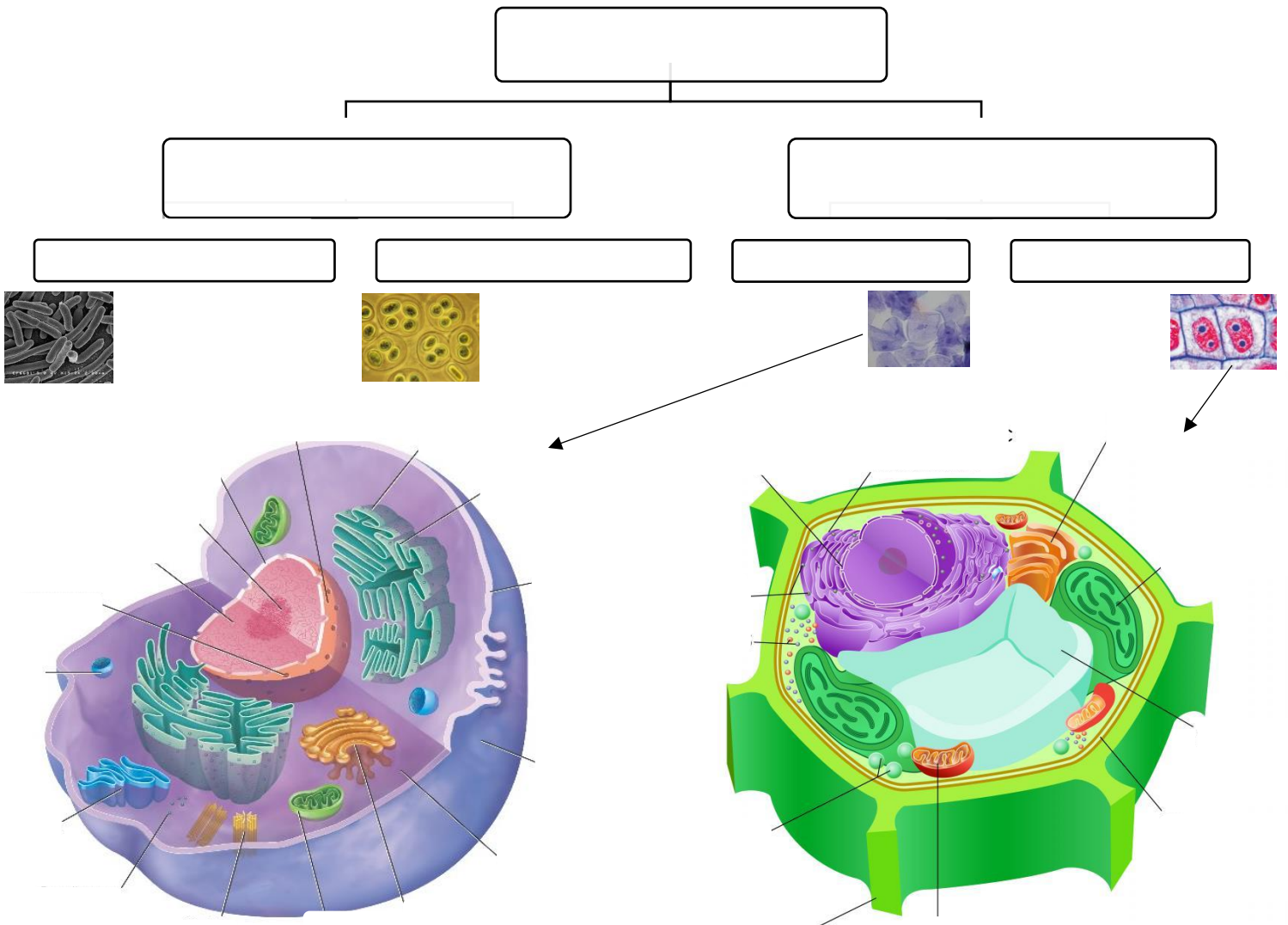
- 1.
- 2.
- 3.



Common Cell structures:



Cell Classification:



Organelle	Structure/Location	Function	
Nucleus			
Ribosomes			
Endoplasmic Reticulum			
Plasma / Cell Membrane			
Cytoplasm			
Golgi Bodies / Complex			
Mitochondria			
Lysosome			
Vesicles			
Vacuoles			
Cytoskeleton			
Cell Wall			
Chloroplast			