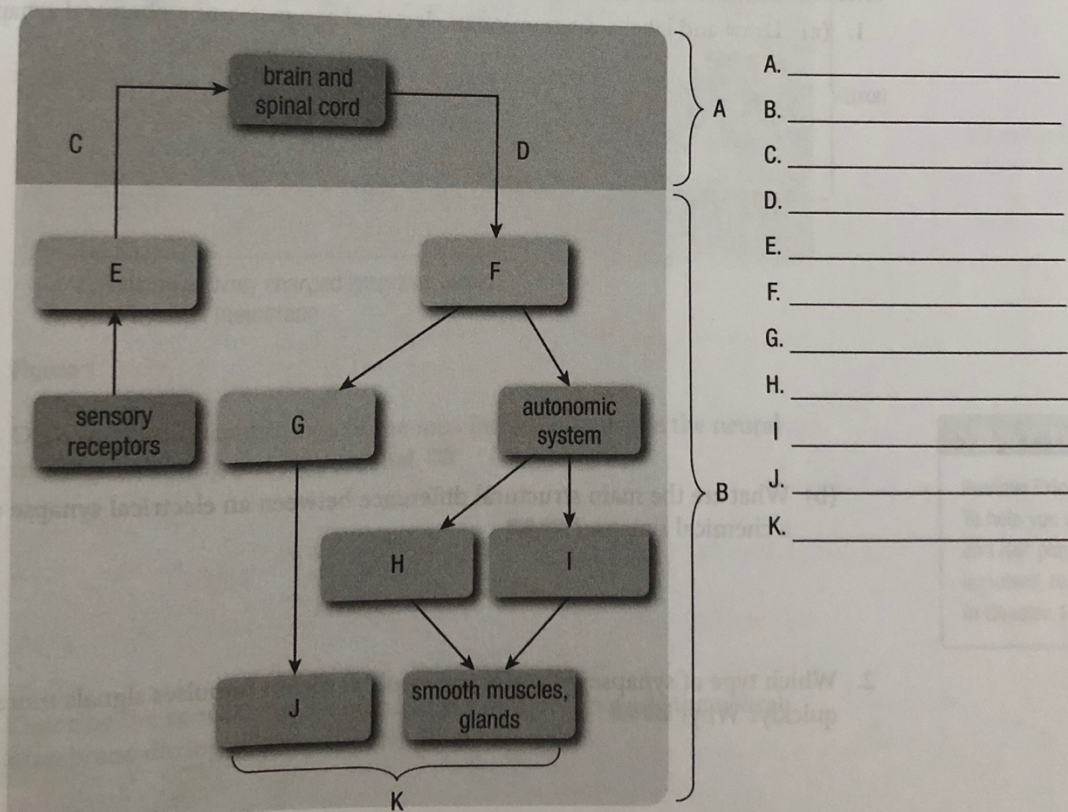


**MAIN IDEA:** The central nervous system (CNS) consists of the brain and spinal cord. It communicates with the peripheral nervous system (PNS), which is made up of the afferent and efferent systems.

5. Which part of the nervous system is used to process information related to each area below? **K/U**
- (a) senses
  - (b) voluntary actions
  - (c) involuntary actions that speed up respiratory metabolism
  - (d) involuntary actions that slow down respiratory metabolism

6. Label the main parts of the nervous system shown in **Figure 3**. **K/U C**



**Figure 3**