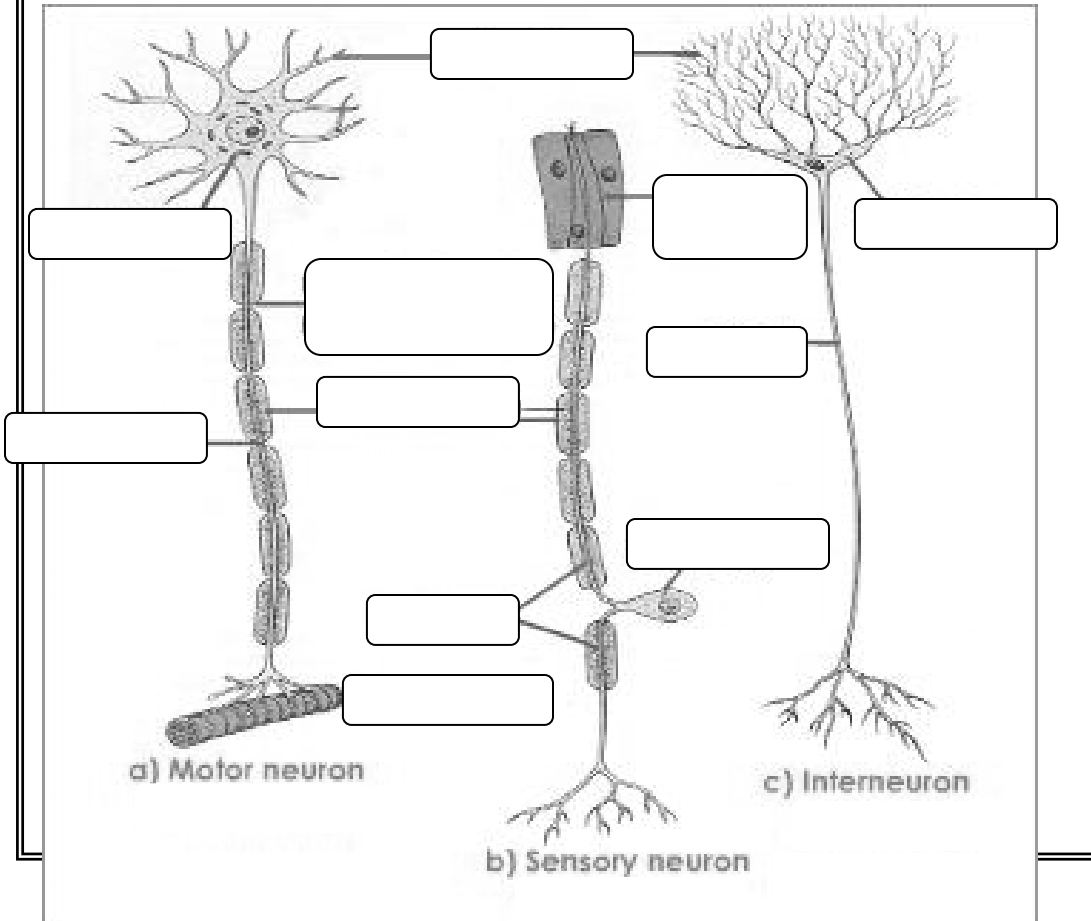


Nerve Cells

2 Types of Nerve Cells

- 1) **Glial cells** – _____ conducting, involved with structural _____ and _____
- 2) **Neurons** – _____ impulses, functional units
 1. **Sensory neurons** (_____) → clusters called _____
Sense & relay stimuli from _____ to _____
 2. **Interneurons** (_____) → In brain & spinal cord.
_____ & _____ sensory stimuli.
_____ afferent & efferent neurons
 3. **Motor neurons** (_____) → _____ information from
CNS to the _____ ex. muscles, glands. organs



Dendrites –

Cell body –

Nucleus –

Axon –

Axon Hillock -

Schwann cells – (a type of glial cell)

Myelin sheath –

Nodes of Ranvier –

Axon Terminal -

