



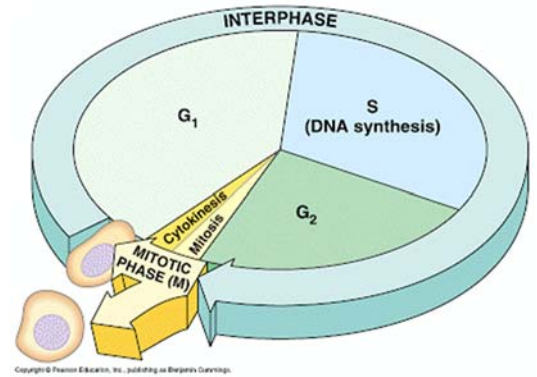
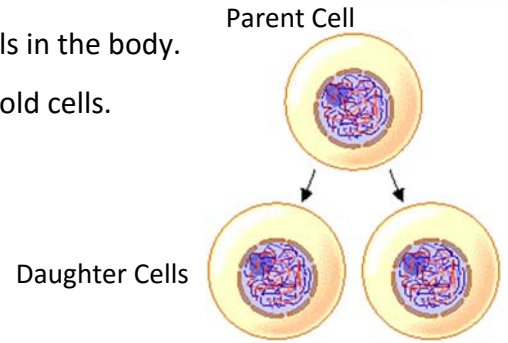
Why do Cells divide?

1. _____ - increase the number of cells in the body.
2. _____ - replace dead, damaged or old cells.
3. _____ - create new organisms

The Cell Cycle

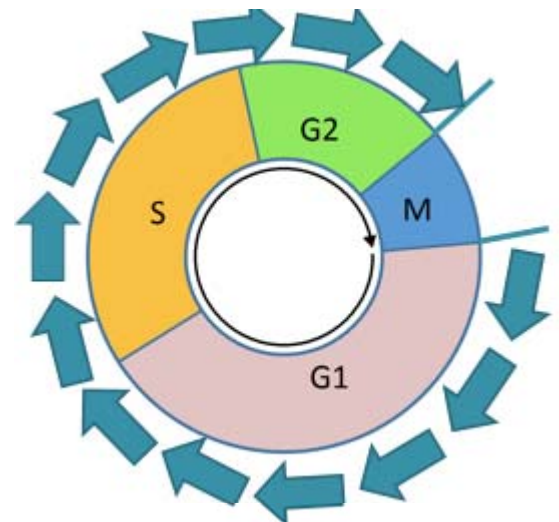
2 PARTS

1. _____:
 Cell _____ damages, _____,
 _____ DNA
2. _____:
 Cells _____ into 2 identical
 _____ cells



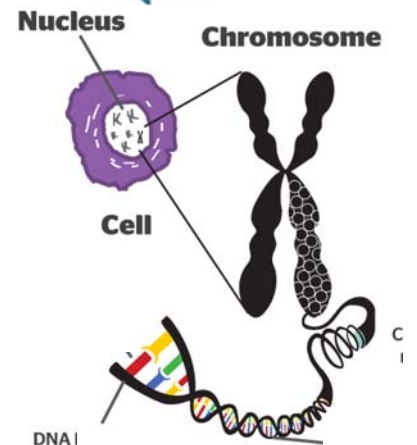
INTERPHASE:

- _____ stage of the cell cycle
 _____ of cycle
- _____ for division
- Divided into _____ phases
 - G₁ – _____
 - S – _____
 - G₂ – _____



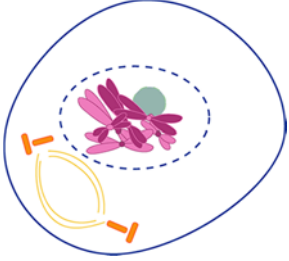
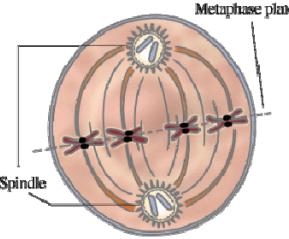
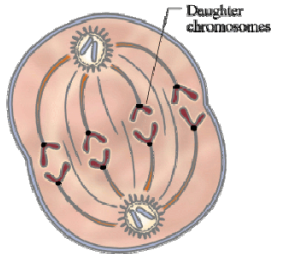
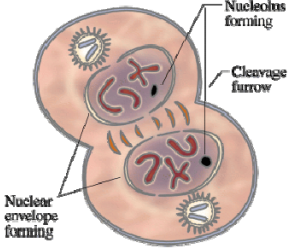
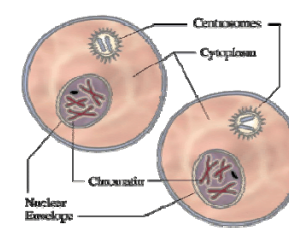
Chromosomes

- _____ DNA
- Allows DNA to _____ without getting



M-PHASE:

- _____ stage of the cell cycle _____ of cycle
- Cell _____
- Divided into _____ phases

1	Prophase		
2	Metaphase		 <p>Metaphase plate Spindle</p>
3	Anaphase		 <p>Daughter chromosomes</p>
4	Telophase		 <p>Nucleolus forming Cleavage furrow Nuclear envelope forming</p>
5	Cytokinesis		 <p>Centrioles Cytoplasm Chromatid Nuclear Envelope</p>