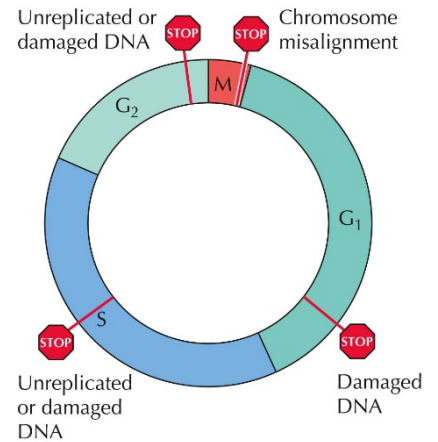


Checkpoints:

- Stops to make sure the cell cycle is _____ properly
- If cells don't _____ checkpoint they stay in _____

G₀ Phase:

- Cells are _____ always dividing
- Cells can enter a _____ phase called _____
Ex. _____ cells



THE CELL, Fourth Edition, Figure 15.8 © 2001 ASM

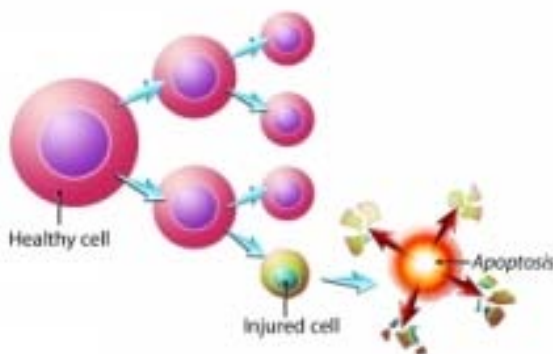
Cell Death

- Cells _____ live forever
 - Usually only divide _____ times then _____
- _____ ways cells die
 - _____: cells damaged from the _____
 - _____: cells damaged from the _____

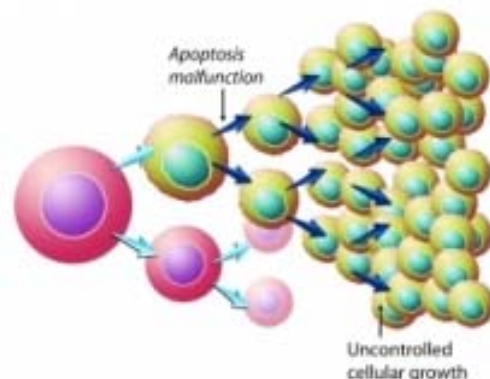
Cancer

- Cell divide _____
- Instead of dying, cancer cells divide _____
- Cells _____ through _____

Normal Cell Division

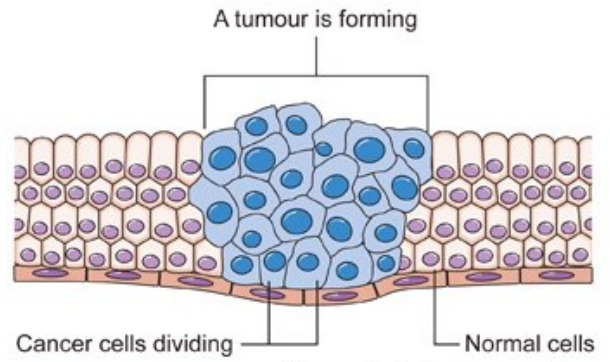


Cancer Cell Division



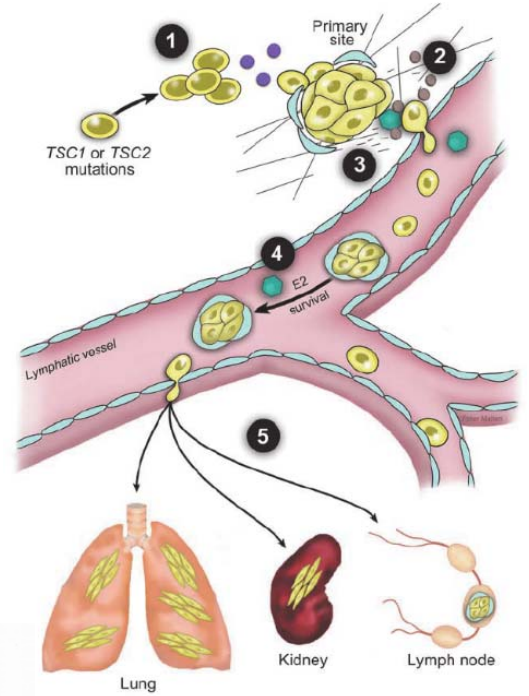
Tumor:

- Cells _____
- Cells don't have a _____
- _____ cells around them



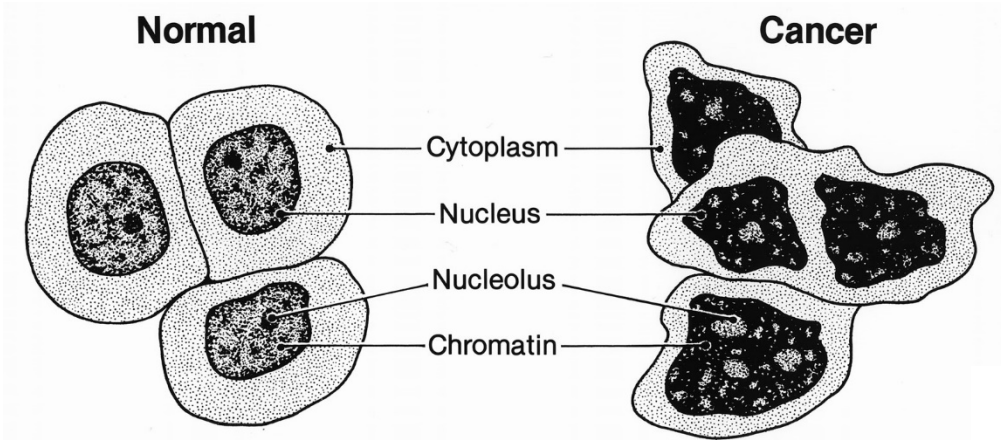
Metastasis:

- Cancer cells that _____ from tumor



Comparing Mitosis:

- Cancer cells
 - _____
 - _____
 - _____



Cancer Causes:

- _____: Natural changes in _____
- _____: _____ factors causing cancer
 - Examples:

